

ATN BlazeHunter Series

THERMAL MONOCULAR CAMERA



MANUAL



ATN EUROPE LTD

TABLE OF CONTENTS

Application	4
Specifications	5
Preparing the device	7
Unpacking	7
Charging the device	7
ON/OFF	7
Firmware Update	8
Interface	8
Main operations	8
Functions	9
Configuring the camera	9
Display	9
Image adjustment	10
Video and snapshot	13
Automatic shutdown	14
Settings	15
Setting hot point	15
Stadiametric range finder	15
Setting laser ranging	16
Setting Wi-Fi connection	17
Setting language	17
Setting DPC	18
Functions	18
Warnings and cautions	20
EU Conformity Statement	22
Battery	22

ADJUSTABLE LENS



TYPE-C PORT

TRIPOD NUT

DIOPTER ADJUSTMENT KNOB



BATTERY
COMPARTMENT

MICROPHONE

CAUTION!

THIS PRODUCT CONTAINS NATURAL RUBBER LATEX, WHICH MAY CAUSE ALLERGIC REACTIONS

The information in this manual is furnished for informational use only, is subject to change without notice. This manual is not to be construed as a commitment by ATN Europe LTD. ATN Europe LTD assumes no responsibility or liability for any errors or inaccuracies that may appear in this book.

©2025 ATN Europe LTD. All rights reserved.

APPLICATION

The thermal monocular camera captures sharp thermal imaging at a fast frame rate for smooth, impeccable vision on running targets and from moving vehicles. Designed to increase situational awareness at any time of day, the camera can detect humans, animals, and objects in complete darkness, haze, or through glaring light, equipping law enforcement professionals, hunters, and outdoor enthusiasts with reliable thermal imaging in tough conditions. Featuring the laser range finder, the Camera can accurately measure the target distance. It is widely used in outdoor scenarios for hunting, rescue, animal observation, and more.

SPECIFICATIONS

Item	BlazeHunter 335	BlazeHunter 335 LRF	BlazeHunter 635	BlazeHunter 635 LRF	BlazeHunter 650 LRF	BlazeHunter XD
Detector Type			12µm VOx Uncooled Focal Plane Array			
Sensor Resolution	384x288		640x512			1280x1024
Refresh Rate			50 Hz			
Thermal Sensitivity (NETD)			<18mK			≤15mK
SharpIR®						Yes
Field of View (HxV)	7.8 x 5.9		12.4 x 10		8.7 x 6.9	17.46° x 14.01°
Lens System		35 mm			50 mm	50mm (Ge); F/1.0
Magnification	4-32x		2.5-20x		3.5-28x	2-16x
Digital Zoom			1x, 2x, 4x, 8x			
Display			OLED 1440x1080			0.49" OLED 1920x1080
Diopter Adjustment Range				-5 to +5D		
Laser Rangefinder				Built-in; range up to 1,000m with ±1m accuracy		
Laser Specs				905nm, Class 1 (Eye Safe)		
Color Palettes				White Hot, Black Hot, High Red, Green Hot, Sepia, Ironbow		
Video/Audio Recording				Yes / Yes		
Image Capture				Yes		
Scene Modes				Yes		
Hot Point Tracking				Yes		

Standby/Sleep Mode	Yes		
Built-in Wi-Fi Hotspot	Yes		
Media Output	USB Type-C		
Internal Storage Capacity	32GB		
Non-Uniformity Correction (NUC)	Auto, Semi, Manual		
App (App store/Google Play)	Yes / ATN Blaze		
Battery Type	Removable 18650 (rechargeable)		
Batteries Included	Yes, 2x		
Battery Life	7 h per battery, 14 h total		5+ hrs per battery, 10+ hrs total
Supports External Power Supply	Yes, 5 VDC/2A, USB Type-C interface		
Waterproof / IP Rating	IP67		
Working Temperature	-30°C to 55°C		
Dimensions (L x W x H)	172 mm x 53 mm x 74 mm	186 mm x 59 mm x 82 mm	202x81x61 mm
Weight (w/o battery)	360 g without battery	375 g without battery	360 g without battery 430 g without battery 495 g without battery
Warranty	3 years		

* ATN reserves the right to change the above specifications at any time without notice.

PREPARING THE DEVICE

UNPACKING

The following steps must be performed before using the device:

1. Open packaging box, remove BlazeHunter and check the contents.
 - Thermal monocular
 - Battery - 2 pcs
 - Battery Charger
 - Camera Pouch
 - Type-C Cable
 - User Manual
 - Lens cloth
 - Warranty card
2. Make sure that nothing is missing.
3. Inspect the device for damage to optical surfaces, body, eyecups, operation buttons, etc.
4. Ensure that all optical surfaces are clean and ready for use.

NOTE

If any accessories are missing or broken contact ATN's Customer Service at +359 32570140.

CHARGING THE DEVICE

The start bar will display battery information after the Camera starts. When the battery is low, charge the Camera timely to make sure the normal function.

- When charging the Camera, keep the battery temperature 0 °C to +60 °C (+32 °F to +140 °F). Otherwise the charging function will be automatically disabled.
- Charge the Camera with the Type-C data cable that comes with the delivery.

STEP 1. Open the sealing cover of the Type-C port when charging.

STEP 2. Connect the Type-C cable to the Type-C port to charge the Camera.

The charging indicator states:

- Red light on: charging.
- Green light on: fully charged.
- Off: not connected to data cable to charge.

ON/OFF

Press and hold the power button to start or shut down the Camera; press the power button to suspend or weak up the Camera.

NOTE

After starting the Camera, remove the protective cover of the lens.

When the Camera is off, press and hold the power button to start it.

When the Camera is on, press and hold the power button to shut down it.



When the Camera is on, press the power button to suspend the Camera/
When the Camera is in suspend mode, press the power button to weak up it.

FIRMWARE UPDATE

BEFORE USING THE DEVICE

Ensure the firmware is up-to-date for optimal performance. Available updates can be found at <https://www.atneu.com/firmware>.

1. Preparing for the Update

- Ensure the device battery level is at least 50%. The update will not start if the battery is below this threshold.

NOTE

Power Off the device before beginning the update process.

2. Transferring the Update File

- Connect the device to a PC or notebook using a USB cable.
- Power On the device.
- Navigate to:
Menu -> Settings -> USB Data Transfer.
- Select “Storage” mode to access the device’s internal memory.
- Copy the update (.bin) file to the USB drive (E:).
- Once the file transfer is complete, return to:
Menu -> Settings -> USB Data Transfer.
- Select ‘Off’, or safely remove the USB cable.

3. Installing the Update

- Reboot the device.
- After the device powers on, a confirmation message “Confirm Update” will appear on the main screen.
- Press “Yes” to start the update process.

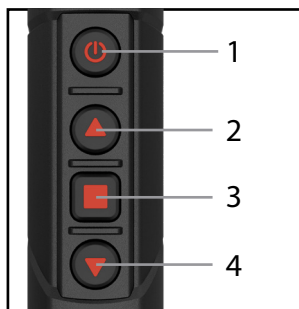
IMPORTANT

If “Storage” mode is selected and the USB cable is still plugged in, the update message will not appear. Disconnect the USB cable before rebooting.

NOTE

After the update, the device may display a “Backup” message on the screen for a short period. This is normal and does not require user action.

INTERFACE



MAIN OPERATIONS

OPERATION WITH KEYPAD

1. POWER BUTTON

- Press and hold to start or shut down the Camera.
- Press to enable or disable the suspend mode.

2. UP BUTTON

- Press and hold to record videos.
- Press to capture images.

For devices with laser range finder:

- Press to enable the laser ranging mode.
- Press and hold to record videos.

CAUTION

Laser can cause damages to eyes. Do not look directly at the laser beam or observe the beam with optical devices when the laser is on.

NOTE

Make sure that you have set the laser ranging mode before enabling the function. For detail, see “Setting Laser Ranging”.

The ranging function is only available when the distance is longer than 10 m.

3. MENU BUTTON

- Press and hold to enter the main menu.
- Press to select the color palettes.

4. DOWN BUTTON

- Press and hold to manually adjust the shutter.
- Press for digital zoom.

5. UP BUTTON + MENU BUTTON

This function is only available on the models with Laser Range Finder.

- Press the two buttons at the same time to capture images.

FUNCTIONS

CONFIGURING THE CAMERA

MENU DESCRIPTION

When the Camera is on, press and hold MENU BUTTON to enter the main menu. Functions of all buttons are as follows.

1. Press UP BUTTON to move upward the cursor.

NOTE

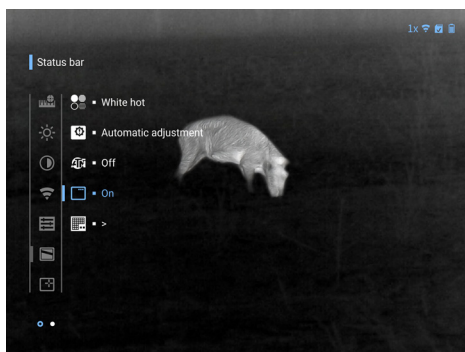
For the camera with laser range finder, press to move upward the cursor. In this section, we use UP BUTTON as an example.

2. Press DOWN BUTTON to move downward the cursor.
3. Press MENU BUTTON to confirm.
4. Press and hold POWER BUTTON to exit.

DISPLAY

SETTING STATUS BAR DISPLAY

1. On the main menu, press UP BUTTON or DOWN BUTTON to select DISPAY.
2. Use UP BUTTON or DOWN BUTTON to go to STATUS BAR and then press MENU BUTTON to enable or disable the status bar.



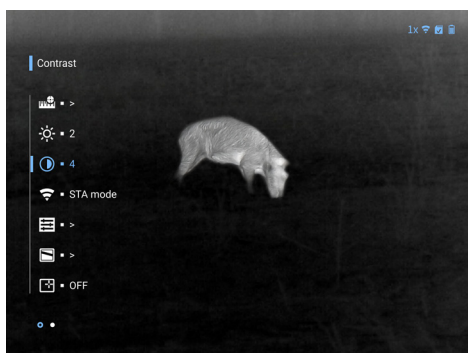
SETTING SCREEN BRIGHTNESS



Adjusts the overall screen brightness. Higher levels make the screen brighter.

1. On the main menu, press UP BUTTON or DOWN BUTTON to select DISPLAY.
2. Use UP BUTTON or DOWN BUTTON to go to SCREEN BRIGHTNESS and press the MENU button to adjust the brightness level.

SETTING CONTRAST



You can set the contrast. The higher the level is, the more the contrast will be between bright and dark areas.

1. On the main menu, press UP BUTTON or DOWN BUTTON to select Contrast.
2. Press MENU BUTTON to select the contrast level.

IMAGE ADJUSTMENT



ADJUSTING DIOPTER

To get clear images, rotating the diopter adjustment knob to fit your eyesight.

NOTE

For the first-time use, adjust the diopter before configuring the functions.

1. Aim the lens at the target, and then make your eyes close to the eyeshade.
2. Adjust clockwise or counterclockwise the knob according to your eyesight.



ADJUSTING FOCUS

Rotate the focusing ring to get a clear view. This function is only available on the models with adjustable lens.

1. Aim the thermal lens to the target.
2. Adjust clockwise or counterclockwise the focusing ring until the view is clear.

NOTE

During the adjustment, do not touch the lens to avoid smudging it; otherwise it may affect the image quality.

SETTING COLOR PALETTES

Select the color palettes, which adds color to the thermal image and uses color to indicate the temperature.

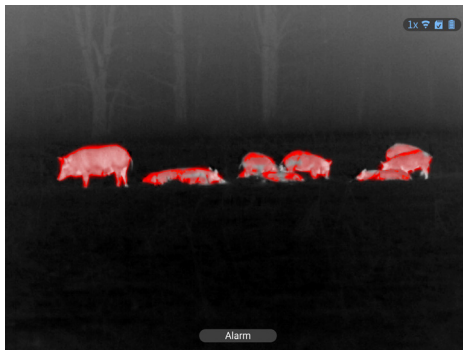
On the viewing screen, press MENU BUTTON to open the MENU and from there use the UP BUTTON and DOWN BUTTON to select DISPLAY. Once in the DISPLAY menu, use the UP BUTTON or DOWN BUTTON to select PALETTES and press the MENU BUTTON to select it. The available palettes are:



White Hot: The objects with high temperature are white. The higher the temperature, the brighter the color.



High red: The objects with high temperature are red. The objects can stand out.



Ironbow: The objects with high temperature are red. The higher the temperature, the brighter the color.



Black Hot: The objects with high temperature are black. The higher the temperature, the darker the color.



Sepia: The objects with high temperature are brown. The higher the temperature, the brighter the color.



Green Hot: The objects with high temperature are green. The higher the temperature, the brighter the color.



SETTING DIGITAL ZOOM

Digital zoom helps to zoom in the image.

On the viewing screen, press DOWN BUTTON to do digital zoom, and the image changes.

SETTING THE SCENE MODE

Adjusts the scene mode in accordance with the user's preference.

1. On the main menu, use the UP BUTTON and DOWN BUTTON to select SCENE MODE.
2. Select the desirable scene mode.

VIDEO AND SNAPSHOT

RECORDING VIDEOS

On the viewing interface, press UP BUTTON and hold for 3 seconds to start recording a video. The recording icon flashes on the screen and the recording time is display.

Press and hold UP BUTTON again for 3 seconds to stop the recording. When the recording stops, the recording time will display normally.



CAPTURING IMAGES



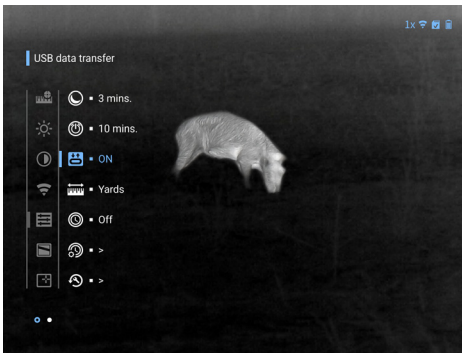
- For devices without LRF
On the main screen, short press the UP button to capture an image.
- For devices with LRF
On the main screen, short press the combination of the UP and MENU buttons to capture an image.
An icon will appear on the screen to confirm a successful capture.

EXPORTING FILE

Exports the recorded and captured files.

aptured files.

1. Connect the Camera to the computer through a Type-C data cable. The driver will automatically be installed for first-time connection.



NOTE

Connect the cables before starting the Camera. Do not hot swap the Type-C port of the Camera. Select Storage on the USB Mode configuration screen after connecting the Camera to the computer.

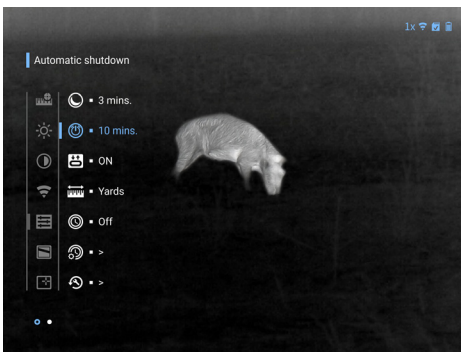
2. On the computer desktop, double-click My Computer, and then open the Camera disk at a mobile storage device.
3. Select the files to export and copy them to the computer.

The specific computer client is required for playing the exported files.

4. Disconnect the Type-C data cable with the computer.

After connecting the Camera to the computer, images can be displayed on the Camera, but the functions of recording and capturing will not be available.

AUTOMATIC SHUTDOWN



1. Press and hold MENU BUTTON to go to the main menu.
2. Press UP BUTTON or DOWN BUTTON to select SETTINGS.
3. Press MENU BUTTON to go to the SETTINGS menu.
4. Press UP BUTTON or DOWN BUTTON to select Automatic shutdown after inactivity.
5. Press MENU BUTTON to set the auto shutdown time. If there

is no operation in the configured time, the Camera will automatically shut down.

6. Press and hold MENU BUTTON to save the configuration and exit.

After finishing the auto shutdown settings, the Camera will suspend first, and then shut down.

SETTINGS

SETTING HOT POINT

Tracks the point with the highest temperature in real time.

- On the main menu, use the UP BUTTON and DOWN BUTTON to select Hot Point.
- Press MENU BUTTON to enable or disable Hot Point.

After enabling Hot Point, the hot point icons will automatically locate at the point with the highest temperature in the image.



STADIAMETRIC RANGE FINDER

The stadiametric range finder can measure the distance to 4 preset target types.

This function is only available on the models without laser range finders. For models with laser range finders, see “Setting Laser Ranging”.

NOTE

To guarantee the measurement accuracy, keep your hand steady when measuring the range.

1. On the main menu, press UP BUTTON or DOWN BUTTON to select STADIAMETRIC RANGE FINDER.
2. Press MENU BUTTON to go to the STADIAMETRIC RANGE FINDER interface.
3. Press UP BUTTON or DOWN BUTTON to move the blue lines to the top and bottom of the target to get the distance between the target and the Camera.

Use the following fig as an example:

- If the target is a jackal, it is 20 m away from Camera.
- If the target is a rabbit, it is 7 m away from Camera.
- If the target is a wild boar, it is 22 m away from Camera.
- If the target is a deer, it is 33 m away from Camera.



SETTING LASER RANGING

This function is only available on the models with laser range finders. For models without laser range finders, see “Setting Ranging Mode”.

CAUTION

Laser can cause damages to eyes. Do not look directly at the laser beam or observe the beam with optical devices when the laser is on.

MEASUREMENT CONSIDERATIONS

1. MEASUREMENT TARGETS

The Camera is suitable for measuring the distance between the camera and the targets with high reflectivity (such as road signs on highways), the targets with moderate reflectivity (such as wall) and the targets with low reflectivity (such as tree, golf flag, utility pole, and animal). When the reflectance is reduced to a certain extent, the range will be reduced accordingly.

2. FACTORS THAT INFLUENCE RANGING CAPABILITY

- Target reflectivity: Generally, the higher the reflectivity of the target, the better the ranging ability. For example, the measuring range of the Camera is 1,500 m for a target with moderate reflectivity, which can be up to 1,800 m for a target with high reflectivity, and 600 m for the targets with low reflectivity. (It might fail to measure the target that hardly generates diffuse reflection, such as water surface.)
- Target shape: When a target is too small or uneven, the ranging ability will decrease.
- Measuring angle: The measurement is more accurate when the reflection surface of target is vertical to the laser emission's direction. If you use the Camera under some extreme conditions, the measurement might be inaccurate.
- Measuring environment: The environment factors include sunshine intensity, the concentration of water vapor in the air and suspended particles (such as rain, fog, snow, fog and haze).

3. THE RANGE ABILITY OF THE CAMERA DEFINED UNDER THE FOLLOWING CONDITIONS:

- The measurement target is with moderate reflectivity, such as walls.
- The reflection surface of target is vertical to laser emission direction.
- The weather condition is sunny but not under the condition of direct sunlight.
- The reflection area is larger than 2 m x 2 m.

USING THE LASER RANGING FUNCTION

After selecting the LASER RANGE FINDER, the device can measure the range towards targets.

NOTE

To guarantee the measurement accuracy, keep your hand steady when measuring the range.

1. On the main menu, use the UP BUTTON and DOWN BUTTON to select Laser Range Finder.
2. Press MENU BUTTON to select the laser ranging mode.

- Once: After pressing the laser button, the Camera measures the distance between the camera and the target once.
- Continue: After pressing the laser button, the Camera continuously measures the distance between the Camera and the target in 15 s.

SETTING WI-FI CONNECTION

To connect your ATN device to your smartphone or tablet, follow these steps:

ENABLE WIFI ON YOUR ATN DEVICE

- Long press the Menu button.
- Use the Up and Down buttons to navigate the menu.
- Select and enable the WiFi function.

INSTALL THE ATN APP

Download the ATN Blaze app from the App Store or Google Play.

Open the app and follow these steps:

1. Tap Connect New Device.
2. Choose your device type and tap next.

NOTE

When this is completed, choose the first option “Connect to BlazeHunter”.

3. Ensure your device’s WiFi is enabled.
4. Tap Read SSID from QR Code and scan the QR code located on the back of the device lens cover.
5. Enter the WiFi password (12345678) when prompted.
6. Tap Next.

Once the app confirms “We found your BlazeHunter,” your device is successfully connected. You can now control your device, access live streaming, and browse the gallery directly from your phone or tablet.

WIFI SPECIFICATIONS

- Frequency band: 2.4 GHz (2.4 GHz to 2.4835 GHz).
- Transmitted power limit: 20 dBm.

SETTING LANGUAGE

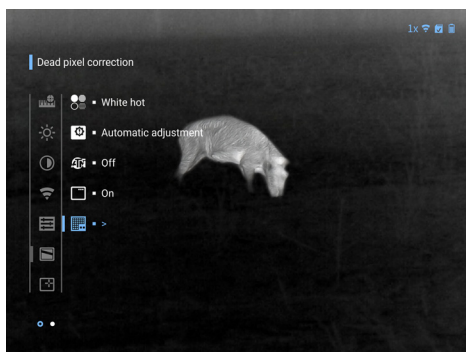
You can select the language as needed.

1. On the main menu, press UP BUTTON or DOWN BUTTON to select SETTINGS.
2. Use UP BUTTON or DOWN BUTTON to select LANGUAGE and press MENU BUTTON to go to the language selection screen.
3. Press DOWN BUTTON to select the language as needed.



4. Press MENU BUTTON to save and exit.

SETTING DPC



After enabling DPC (Defective / Dead Pixels Correction), you can correct the defective pixels in the image.

1. On the main menu, use the UP BUTTON and DOWN BUTTON to select DISPLAY.

2. Press MENU BUTTON to go to the DISPLAY menu.

3. Use the UP BUTTON and DOWN BUTTON to select Dead Pixel Correction.

4. Press the MENU BUTTON

to go to the Dead Pixel Correction menu.

- Auto: The Camera automatically corrects the defective pixels in the image.

1. Select Auto.

2. Press MENU BUTTON to start the auto correction.

3. Follow the screen instructions to close the lens cover.

4. Press MENU BUTTON to save the configurations.

- Manual: You need to correct the defective pixels manually.

1. Press MENU BUTTON to select X-axis and Y-axis.

2. Press and hold UP BUTTON or DOWN BUTTON to calibrate the defective pixels.

3. Press and hold MENU BUTTON to save the configuration.

NOTE

The center of the cursor is the position of the defective pixel.

- Restore: The DPC configuration is restored to the primary state.

FUNCTIONS

1. On the main menu, use the UP BUTTON and DOWN BUTTON to select Settings.

2. Press MENU BUTTON to go to the desired configuration screen.

3. Use the UP BUTTON and DOWN BUTTON to select the function to be configured.

MAIN MENU	
Parameter	Description
LRF Mode	Allows the user to select the mode for measuring the distance to a target. NOTE <i>This parameter is only available on devices equipped with a Laser Range Finder (LRF).</i>

MAIN MENU	
Stadiametric RF	Enables distance measurement based on target height using one of four preset target types. NOTE <i>This function is only available on models without a LRF; for LRF models, refer to “Setting Laser Ranging”.</i>
Image Brightness	Allows the user to change the image brightness.
Contrast	Allows the user to change the image contrast.
Sharpness	Allows the user to change the image sharpness.
WiFi	Allows the user to select the mode of operation of the WiFi module or the turn it off.
Settings	Allows the user to enter the Settings Menu.
Display	Allows the user to enter the Display Menu.
Hot point	Allows the user to enable this function. It marks the hottest point on the currently observed scene.
NUC	Allows the user to select the non-uniformity correction to automatic, manual or to perform it immediately.
Scene mode	Allows the user to select a scene mode which fits better to the observed environment.
Device and WiFi information	Displays information about the device and the WiFi status.

SETTINGS	
Parameter	Description
Standby mode after inactivity	Allows the user to set timer for the device to go into stand-by mode after a period of inactivity.
Automatic shutdown after inactivity	Allows the user to set timer for the device to go into shut down after a period of inactivity.
USB data transfer	Allows or forbids the data transfer through the USB Type-C port.
Rangefinder units	Allows the user to change the range finder units into meters or yards.
Date format	Allows the user to set the desired format for date and time.
Set date and time	Allows the user to set the device date and time.
Set Password	Allows the user to set a password for WiFi.
Language	Allows the user to change the language in the menus.

SETTINGS

Set to default	Resets the device default settings. NOTE <i>This operation will restore the device to default configuration. Please be careful.</i>
----------------	---

DISPLAY

Parameter	Description
Palettes	Allows the user to change the thermal imaging color palettes.
Screen Brightness	Allows the user to change the screen brightness.
Record Audio	Allows the user to enable or disable the microphone.
Burning warning	Allows the user to enable the burning warning function. When the sensor is under the risk of burning, a pop-up will be displayed on the screen and the shutter will be off automatically.
Logo	Allows the user to enable and disable the ATN logo during boot-up.
Status bar	Allows the user to enable or disable the status bar.
DPC (Dead Pixel Correction)	Takes the user to the Dead Pixel Correction menu.

WARNINGS AND CAUTIONS

- Prevent liquid from flowing into the Camera to avoid damage to the internal components.
- Do not stuff foreign materials into the Camera to prevent a short circuit which could result in the Camera being damaged or people becoming injured.
- Do not expose the device to high electromagnetic radiation or dusty environments.
- Do not aim the lens at the sun or any other bright light.
- Improper use or replacement of the battery may result in explosion hazard.
- Do not charge other battery types with the supplied charger. Confirm there is no flammable material within 2 m of the charger during charging.
- Make sure that the plug is properly connected to the power socket.
- Do not connect multiple devices to one power adapter, to avoid over-heating or fire hazards caused by overload.
- If smoke, odor, or noise arises from the device, immediately turn off the power, unplug the power cable, and contact the service center.
- Do not dismantle the Camera. The internal components can only be repaired by a qualified professional. Dismantling it without professional


assistance might cause water seeping in or might result in the Camera producing poor quality images.

- Operating temperature: $-30\text{ }^{\circ}\text{C}$ to $+55\text{ }^{\circ}\text{C}$ ($-22\text{ }^{\circ}\text{F}$ to $+131\text{ }^{\circ}\text{F}$), and the operating humidity shall be 95% or less.
- Prevent liquid from flowing into the Camera to avoid damage to the internal components. In case the liquid enters the Camera, immediately stop using the Camera, cut off the power, and disconnect all the cables, and then contact your local customer service center.
- Use the accessories regulated by the manufacturer. The Camera should be maintained by qualified professionals.
- Make sure to cut off the power before cleaning the Camera, to prevent electric shock.
- Clean the Camera body with a piece of soft dry cloth. For any dirt that is hard to remove, pick up a piece of clean and soft cloth, dip it into a little neutral detergent and gently wipe the dust away.
- After that, wipe away all the remaining liquid on the Camera with another dry cloth. Never use volatile solvents such as alcohol, benzene and thinner, or cleaners that are strong and abrasive.
- Otherwise, the Camera's surface coating will be damaged and its working performance will be encumbered.

CAUTION

Failure to follow these safety instructions could result in damage to the device!

EU CONFORMITY STATEMENT

 This product and, where applicable, the supplied accessories are CE marked and comply with the applicable harmonized European Union legislation. This equipment is in conformity with: Directive 2014/53/EU (Radio Equipment Directive – RED)/ Directive 2011/65/EU (Restriction of Hazardous Substances – RoHS) / Regulation (EU) 2023/1542 on batteries and waste batteries /Directive 2012/19/EU (Waste Electrical and Electronic Equipment – WEEE). The full EU Declaration of Conformity is available via the QR code below or upon request from the manufacturer.



In accordance with Directive 2012/19/EU, this product shall not be disposed of as unsorted municipal waste. For proper recycling, return the product to your supplier upon purchase of equivalent new equipment or dispose of it at designated collection facilities in accordance with local regulations.



This product contains rechargeable lithium-ion batteries. In accordance with Regulation (EU) 2023/1542, batteries are subject to separate collection and recycling requirements and shall not be disposed of as unsorted municipal waste. The removable 18650 battery may be replaced by the end-user in accordance with the instructions provided in this manual. Improper handling of lithium-ion batteries may result in fire, explosion, or injury.

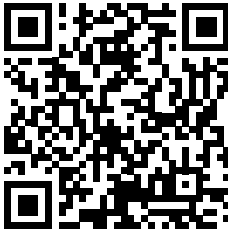
BATTERY

- The improper use or replacement of the battery may result in explosion hazard. Replace with the same battery type only.
- The removable battery is 2 cells of type 18650. The rated voltage is 3.6 VDC.
- Use only batteries provided by a qualified manufacturer.
- DO NOT place the device near heating or fire source. Avoid leaving the device on heated surfaces under direct sunlight.
- DO NOT place the device within the reach of children.

Scan the QR code below to access the EU Declaration of Conformity for this product.



**BlazeHunter
standard series**



**BlazeHunter
XD series**



ATN EUROPE LTD

1588, SOFIA, BULGARIA, UL. "OKOLOVRASTEN PAT" 456B

INTER LOGISTIC PARK

PHONE: +359 32570140

E-MAIL:

SUPPORT@ATNEU.COM; SALES@ATNEU.COM

WWW.ATNEU.COM